



*The Garden Club of Georgia, Inc. and
National Garden Clubs, Inc.*



Present

Landscape Design School Series 29 Course II

November 8-9, 2023

The Garden Club of Georgia State Headquarters

2450 S. Milledge Avenue

Athens, Georgia 30605

Wednesday, November 8

9:30-10:00	Registration/ Zoom Sign-in	
10:00-10:15	Welcome & Introduction	Betty Davis, Marilyn McDonnell
10:15-11:15	Redesign of Areas	Suzanne Finger
11:30-12:30	Accessible, Enabling & Therapeutic Gardens	Suzanne Finger
12:45-1:15	Lunch	
1:15-2:15	Structures in the Landscape	Keeli Windham
2:30-3:30	Plants in the Landscape	Brad Davis
3:45-4:45	Overused, Often Invasive Plants & Native Alternatives	Brad Davis
5:00	Daily Wrap Up	Marilyn McDonnell

Thursday, November 9

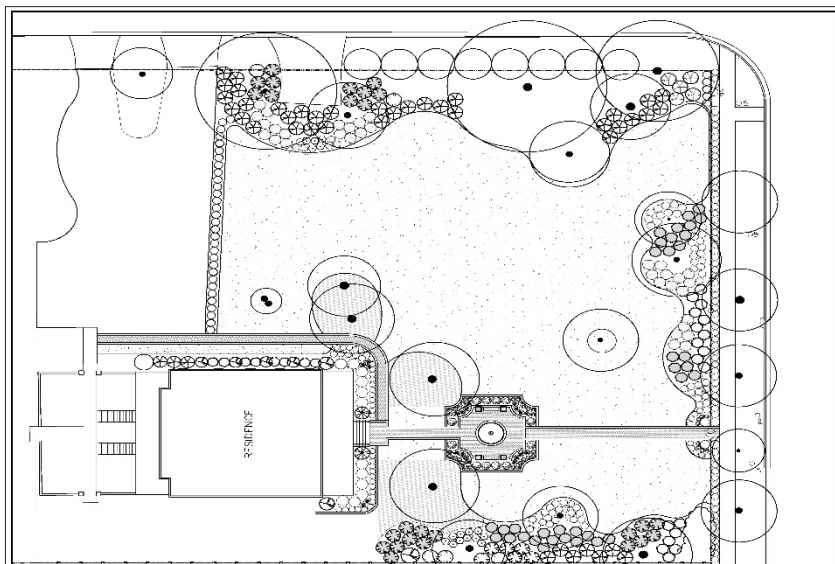
8:30-9:00	Registration/Zoom Sign-in	
9:00-10:00	Landscape Design Process	Katherine Melcher
10:15-11:15	Designing for Pollinators & Wildlife	Katherine Melcher
11:30-12:30	Development of North American Landscape Design	Dan Nadenicek
12:45-1:15	Lunch	
1:15-2:15	Development of Landscape Architecture from Central Park to Today	Dan Nadenicek
2:30-3:30	Preservation of Historic Sites & Structures	Keeli Windham
4:00	Closing	Betty Davis, Marilyn McDonnell

Instructors

Dr. Daniel Nadenicek	Professor Emeritus University of Georgia College of Environment & Design
Brad Davis	Dan B. Franklin Distinguished Professor, UGA College of Environment & Design
Katherine Melcher	Associate Professor, UGA College of Environment & Design
Keeli Windham	President, Wormsloe Institute for Environmental History, MLA
Suzanne Finger	Registered Landscape Architect, GCG Member

Sponsored by

**Landscape Design Consultants of Georgia, Betty Davis, President
The Garden Club of Georgia, Lisa Hall, President**



Learn to Design like a PRO!

Courses open to GCG and NGC Members as well as the PUBLIC

ALL REGISTRATIONS ARE ONLINE **BY OCTOBER 30**

LINK: <https://forms.gle/gd7HUYJHhTFEPfsC6>

Additional NGC forms for Refreshing Consultants (Form 7) and Students seeking Certification (Form 6) are to be sent to the GCG State Chairman for Landscape Design via email. Bettyboop2315@yahoo.com. Links for these forms will be sent to registrants upon receipt of registration or they may also be found in the FORMS section of the NGC website, www.gardenclub.org.

Checks for registration fees will be mailed to the registrar and must be **received** by November 4. Checks are to be made out to Landscape Design Consultants of GA. Mailing address: **Alice Guppy, 93 Berkeley Rd., Avondale Estates, GA 30002**

ONLINE PARTICIPANTS

Must use PC/Laptop, or tablet/iPad. **Phones are not acceptable.**

Must have Zoom 5.4 or later version on computer being used to avoid drop offs

Must participate in brief Pre-Course Orientation Session on Sunday, November 5, 3 pm ET
(If schedule conflict, contact Marilyn McDonnell, mmcdonnell25@comcast.net)

Athens Area Hotel Information:

Holiday Inn Express, 513 W. Broad Street, Athens, GA 30601. Phone 706-546-8122

or 1-800-HOLIDAY (465-4329). From \$156/night plus taxes and fees, includes free breakfast.

Online reservations <https://www.ihg.com/holidayinnexpress/hotels/us/en/athens/ahndt/hoteldetail>

University of GA Continuing Education & Hotel, 1197 S Lumpkin St., Athens, GA 30602. Phone 706-542-2134

From \$229/night plus taxes and fees. Online reservations www.hotel.uga.edu

Springhill Suites Athens, 3500 Daniels Bridge Rd., Athens, GA 30606. Phone 706-353-8484 From \$184/night plus taxes and fees. Online reservations www.marriott.com