



*The Garden Club of Georgia, Inc. and
National Garden Clubs, Inc.
Present
Landscape Design School Series 29 Course III
April 2-3, 2024
Zoom*



Tuesday, April 2

9:30-10:00	Registration/ Zoom Sign-in
10:00-10:15	Welcome & Introduction
10:15-12:15	Landscape Design Process
12:30-1:00	Lunch
1:00-2:00	Demonstration of landscape plan development
2:00-3:00	Graphics Interpretation
3:15-4:15	Individual work on landscape plan

Wednesday, April 3

8:30-9:00	Registration/Zoom Sign-In
9:00-10:00	Woody Plants in the Landscape
10:15-11:15	Herbaceous Materials in the Landscape
11:30-12:30	Landscape Design with Maintenance in Mind
12:45-1:15	Lunch
1:15-2:15	Supplemental Subject
2:30-3:30	Review of students' landscape plans
3:45	Closing

The order of these topics might change.

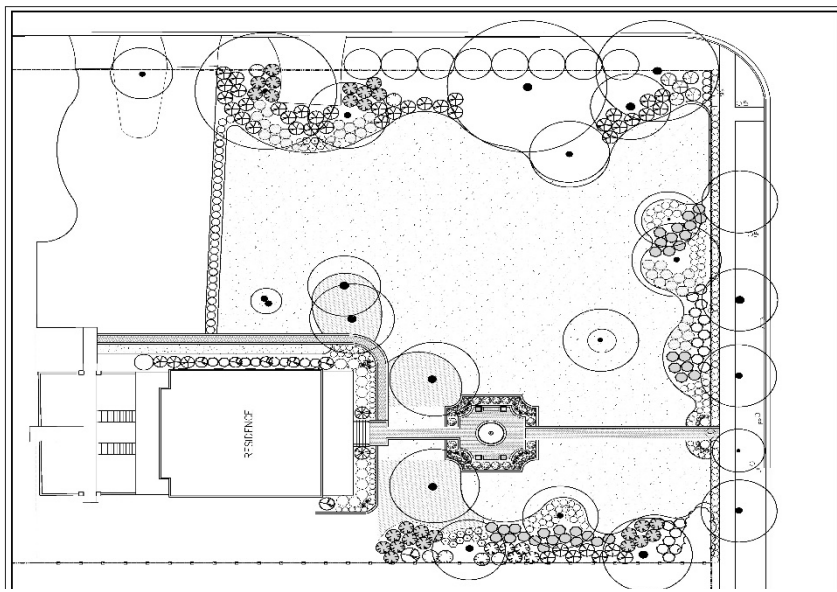


Instructors

University of Georgia professors, Landscape Architects, County Extension Agents, and Master NGC Landscape Consultants throughout Georgia

Sponsored by

**Landscape Design Consultants of Georgia, Betty Davis, President
The Garden Club of Georgia, Lisa Hall, President**



Learn to Design like a PRO!

Courses open to GCG and NGC Members as well as the PUBLIC

ALL REGISTRATIONS ARE ONLINE **BY March 28**

Fee \$100 (Additional \$5 if seeking Consultant Credit or Refresher Credit from NGC)

LINK: <https://forms.gle/kGfS6aMyNrZDqENb8>

Additional NGC forms for Refreshing Consultants (Form 7) and Students seeking Certification (Form 6) are to be sent to the GCG State Chairman for Landscape Design via email. Bettyboop2315@yahoo.com. Links for these forms will be sent to registrants upon receipt of registration or they may also be found in the FORMS section of the NGC website, www.gardenclub.org.

Checks for registration fees will be mailed to the registrar and must be **received** by March 9. Checks are to be made out to Landscape Design Consultants of GA. Mailing address: **Marilyn McDonnell, 830 Rycroft Ln., Franklin, TN 37064-1907**

All Participants seeking credit (both new students and refreshing consultants) must have an accurately measured drawing of a small area of landscape they would like to design/redesign. This drawing will be used to create a landscape design as part of this course!

ONLINE PARTICIPANTS

Must use PC/Laptop, or tablet/iPad. **Phones are not acceptable.**

Must have Zoom 5.4 or later version on computer being used to avoid drop offs

Must participate in brief Pre-Course Orientation Session on Sunday, March 31, 3 pm ET (If schedule conflict, contact Marilyn McDonnell, mmcdonnell25@comcast.net)

